

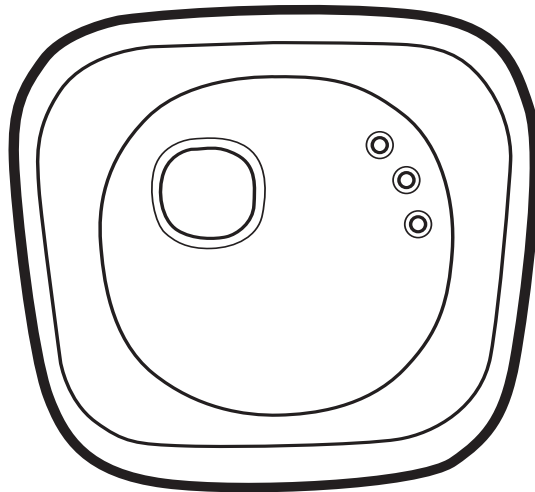
Memorex[®]

Is it live or is it Memorex?[™]

MP8700

User's Guide

Portable CD Player with
AM/FM Stereo Radio



**Before operating this product,
please read these instructions completely.**



Dear Customer,

Please read this manual thoroughly before operating the unit to become more familiar with it and obtain the performance that will bring you continued enjoyment for many years. Keep these instructions handy for future reference.

PLEASE KEEP ALL PACKAGING MATERIAL FOR AT LEAST 90 DAYS IN CASE YOU NEED TO RETURN THIS PRODUCT TO YOUR PLACE OF PURCHASE OR MEMOREX.

For future reference, record the serial number of the unit printed on the rear of the cabinet.

Serial Number _____

	CAUTION RISK OF ELECTRIC SHOCK DO NOT OPEN	
CAUTION: TO REDUCE THE RISK OF ELECTRIC SHOCK, DO NOT REMOVE COVER (OR BACK). NO USER-SERVICEABLE PARTS INSIDE. REFER SERVICING TO QUALIFIED SERVICE PERSONNEL.		



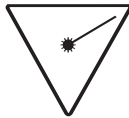
DANGEROUS VOLTAGE:

The lightning flash with arrowhead symbol, within an equilateral triangle is intended to alert the user to the presence of uninsulated dangerous voltage within the product's enclosure that may be of sufficient magnitude to constitute a risk of electric shock to persons.



ATTENTION:

The exclamation point within an equilateral triangle is intended to alert the user to the presence of important operating and maintenance (servicing) instructions in the literature accompanying the appliance.



DANGER:

Invisible and hazardous laser radiation when open and interlock failed or defeated. Avoid direct exposure to beam.

FCC WARNING: This equipment may generate or use radio frequency energy. Changes or modifications to this equipment may cause harmful interference unless the modifications are expressly approved in the instruction manual. The user could lose the authority to operate this equipment if an unauthorized change or modification is made.

LASER SAFETY: This unit employs a laser. Only qualified service personnel should attempt to service this device due to possible eye injury. CAUTION: USE OF CONTROLS, ADJUSTMENTS OR PERFORMANCE PROCEDURE HEREIN MAY RESULT IN HAZARDOUS RADIATION EXPOSURE.
--

INFORMATION: This equipment has been tested and found to comply with the limits for a Class B digital device, pursuant to Part 15 of the FCC Rules. These limits are designed to provide reasonable protection against harmful interference in a residential installation. This equipment generates, uses and can radiate radio frequency energy and, if not installed and used in accordance with the instructions, may cause harmful interference to radio communications. However, there is no guarantee that interference will not occur in a particular installation. If this equipment does cause harmful interference to radio or television reception, which can be determined by turning the equipment off and on, the user is encouraged to try to correct the interference by one or more of the following measures: <ul style="list-style-type: none">• Reorient or relocate the receiving antenna.• Increase the separation between the equipment and receiver.• Connect the equipment into an outlet on a circuit different from that to which the receiver is connected.• Consult the dealer or an experienced radio/TV technician for help.
--

WARNING: TO PREVENT FIRE OR SHOCK HAZARD, DO NOT EXPOSE THIS UNIT TO RAIN OR MOISTURE.

SURGE PROTECTORS: It is recommended to use a surge protector for AC connection. Lightning and power surges ARE NOT covered under warranty for this product.

Dear Customer:

Selecting fine audio equipment such as the unit you've just purchased is only the start of your musical enjoyment. Now it's time to consider how you can maximize the fun and excitement your equipment offers. This manufacturer and the Electronic Industries Association's Consumer Electronics Group want you to get the most out of your equipment by playing it at a safe level. One that lets the sound come through loud and clear without annoying blaring or distortion and, most importantly, without affecting your sensitive hearing. Sound can be deceiving. Over time your hearing "comfort level" adapts to higher volumes of sound. So what sounds "normal" can actually be loud and harmful to your hearing. Guard against this by setting your equipment at a safe level BEFORE your hearing adapts.

To establish a safe level:

- Start your volume control at a low setting.
- Slowly increase the sound until you can hear it comfortably and clearly, and without distortion.

Once you have established a comfortable sound level:

- Set the dial and leave it there.

Taking a minute to do this now will help to prevent hearing damage or loss in the future. After all, we want you listening for a lifetime.

We Want You Listening For A Lifetime

Used wisely, your new sound equipment will provide a lifetime of fun and enjoyment. Since hearing damage from loud noise is often undetectable until it is too late, this manufacturer and the Electronic Industries Association's Consumer Electronics Group recommend you avoid prolonged exposure to excessive noise. This list of sound levels is included for your protection.

Decibel

<u>Level</u>	<u>Example</u>
30	Quiet library, soft whispers
40	Living room, refrigerator, bedroom away from traffic
50	Light traffic, normal conversation, quiet office
60	Air conditioner at 20 feet, sewing machine
70	Vacuum cleaner, hair dryer, noisy restaurant
80	Average city traffic, garbage disposals, alarm clock at two feet

THE FOLLOWING NOISES CAN BE DANGEROUS UNDER CONSTANT EXPOSURE:

90	Subway, motorcycle, truck traffic, lawn mower
100	Garbage truck, chain saw, pneumatic drill
120	Rock band concert in front of speakers, thunderclap
140	Gunshot blast, jet engine
180	Rocket launching pad

Information courtesy of the Deafness Research Foundation.



SAFETY INSTRUCTIONS

Before using the unit, be sure to read all operating instructions carefully. Please note that these are general precautions and may not pertain to your unit. For example, this unit may not have the capability to be connected to an outdoor antenna.

1. READ INSTRUCTIONS

All the safety and operating instructions should be read before the product is operated.

2. RETAIN INSTRUCTIONS

The safety and operating instructions should be retained for future reference.

3. HEED WARNINGS

All warnings on the product and in the operating instructions should be adhered to.

4. FOLLOW INSTRUCTIONS

All operating and use instructions should be followed.

5. CLEANING

Unplug this product from the wall outlet before cleaning. Do not use liquid cleaners or aerosol cleaners. Use a dry cloth for cleaning.

6. ATTACHMENTS

Do not use attachments not recommended by the product's manufacturer as they may cause hazards.

7. WATER AND MOISTURE

Do not use this product near water- for example, near a bathtub, washbowl, kitchen sink, or laundry tub, in a wet basement, or near a swimming pool.

8. ACCESSORIES

Do not place this product on an unstable cart, stand, tripod, bracket, or table. The product may fall, causing serious injury and serious damage to the product. Use only with a cart, stand, tripod, bracket, or table recommended by the manufacturer or sold with the product. Any mounting of the product should follow the manufacturer's instructions, and should use a mounting accessory recommended by the manufacturer.

PORTABLE CART WARNING
(symbol provided by RETAC)



8A. An appliance and cart combination should be moved with care. Quick stops, excessive force, and uneven surfaces may cause the appliance and cart combination to overturn.

9. VENTILATION

Slots and openings in the cabinet and in the back or bottom are provided for ventilation and to ensure reliable operation of the product and to protect it from overheating. These openings must not be blocked or covered. The openings should never be blocked by placing the product on a bed, sofa, rug, or other similar surface. This product should never be placed near or over a radiator or heat source. This product should not be placed in a built-in installation such as a bookcase or rack unless proper ventilation is provided or the manufacturer's instructions have been adhered to.

10. POWER SOURCES

This product should be operated only from the type of power source indicated on the marking label. If you are not sure of the type of power supply to your home, consult your appliance dealer or local power company. For products intended to operate from battery power, or other sources, refer to the operating instructions.

11. GROUNDING OR POLARIZATION

This product is equipped with a polarized alternating-current line plug (a plug having one blade wider than the other). This plug will fit into the power outlet only one way. This is a safety feature. If you are unable to insert the plug fully into the outlet, try reversing the plug. If the plug should still fail to fit, contact your electrician to replace your obsolete outlet. Do not defeat the safety purpose of the polarized plug.

12. POWER-CORD PROTECTION

Power-supply cords should be routed so that they are not likely to be walked on or pinched by items placed upon or against them, paying particular attention to cords at plugs, convenience receptacles, and the point where they exit from the appliance.

13. LIGHTNING

To protect your product from a lightning storm, or when it is left unattended and unused for long periods of time, unplug it from the wall outlet and disconnect the antenna or cable system. This will prevent damage to the product due to lightning and power-line surges.

14. POWER LINES

An outside antenna system should not be located in the vicinity of overhead power lines or other electric light or power circuits, or where it can fall into such power lines or circuits. When installing an outside antenna system, extreme care should be taken to keep from touching such power lines or circuits as contact with them might be fatal.

15. OVERLOADING

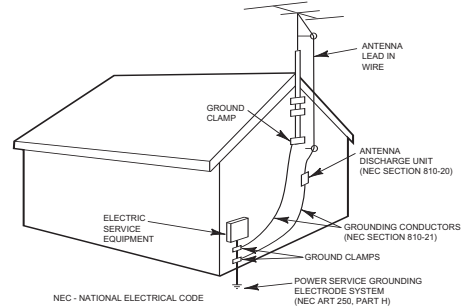
Do not overload wall outlets and extension cords as this can result in a risk of fire or electric shock.

16. OBJECT AND LIQUID ENTRY

Never push objects of any kind into this product through openings as they may touch dangerous voltage points or short out parts that could result in fire or electric shock. Never spill or spray any type of liquid on the product.

17. OUTDOOR ANTENNA GROUNDING

If an outside antenna is connected to the product, be sure the antenna system is grounded so as to provide some protection against voltage surges and built-up static charges. Section 810 of the National Electric Code, ANSI/NFPA 70, provides information with respect to proper grounding of the mast and supporting structure, grounding of the lead-in wire to an antenna discharge product, size of grounding conductors, location of antenna discharge product, connection to grounding electrodes, and requirements for grounding electrode.



EXAMPLE OF ANTENNA GROUNDING AS PER NATIONAL ELECTRICAL CODE

18. SERVICING

Do not attempt to service this product yourself as opening or removing covers may expose you to dangerous voltage or other hazards. Refer all servicing to qualified service personnel.

19. REPLACEMENT PARTS

When replacement parts are required, be sure the service technician uses replacement parts specified by the manufacturer or those that have the same characteristics as the original part. Unauthorized substitutions may result in fire, electric shock or other hazards.

20. SAFETY CHECK

Upon completion of any service or repairs to this product, ask the service technician to perform safety checks to determine that the product is in proper operating condition.

21. WALL OR CEILING MOUNTING

The product should be mounted to a wall or ceiling only as recommended by the manufacturer.

22. DAMAGE REQUIRING SERVICE

Unplug the product from the wall outlet and refer servicing to qualified service personnel under the following conditions:

- When the power-supply cord or plug is damaged.
- If liquid has been spilled, or objects have fallen into the product.
- If the product has been exposed to rain or water.
- If the product does not operate normally by following the operating instructions. Adjust only those controls that are covered by the operating instructions, as an adjustment of other controls may result in damage and will often require extensive work by a qualified technician to restore the product to its normal operation.
- If the product has been dropped or the cabinet has been damaged.
- When the product exhibits a distinct change in performance - this indicates a need for service.

23. HEAT

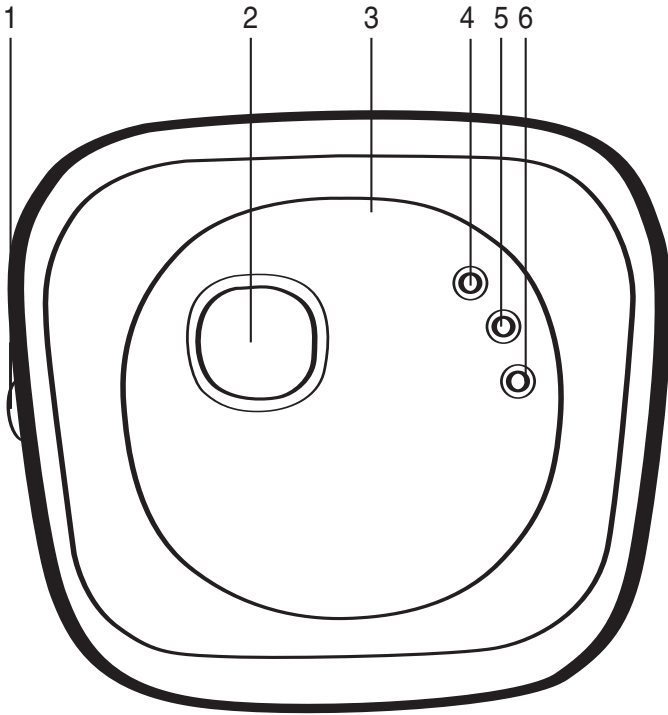
The product should be situated away from heat sources such as radiators, heat registers, stoves, or other products (including amplifiers) that produce heat.

24. NOTE TO CATV SYSTEM INSTALLER

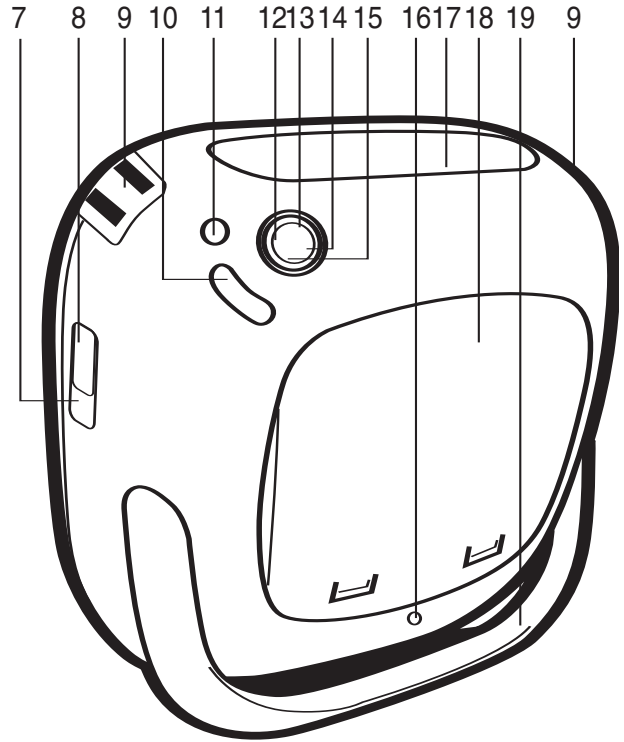
This reminder is provided to call the CATV system installer's attention to Article 820-40 of the NEC that provides guidelines for proper grounding and, in particular, specifies that the cable ground shall be connected to the grounding system of the building, as close to the point of cable entry as practical.






LOCATION OF CONTROLS

FRONT



REAR



1. VOLUME Control (Side of Unit)
2. Display
3. CD Door Open/Close Area
4. Power Button
5. MODE/CH+ Button
6. PROG./CH SAVE Button
7. HOLD Switch
8. Headphones Jack
9. Strap Holder
10. BAND (AM/FM) Button
11. BBS (Bass Boost) Button
12. Tune/Skip/Search  Button
13. PLAY/PAUSE ( )/CD Button
14. Tune/Skip/Search  Button
15. Stop () Button
16. DC Jack
17. Carrying Handle
18. Battery Compartment
19. Stand

POWER SOURCES

This unit is designed to operate on AC household current or DC (batteries).

AC OPERATION

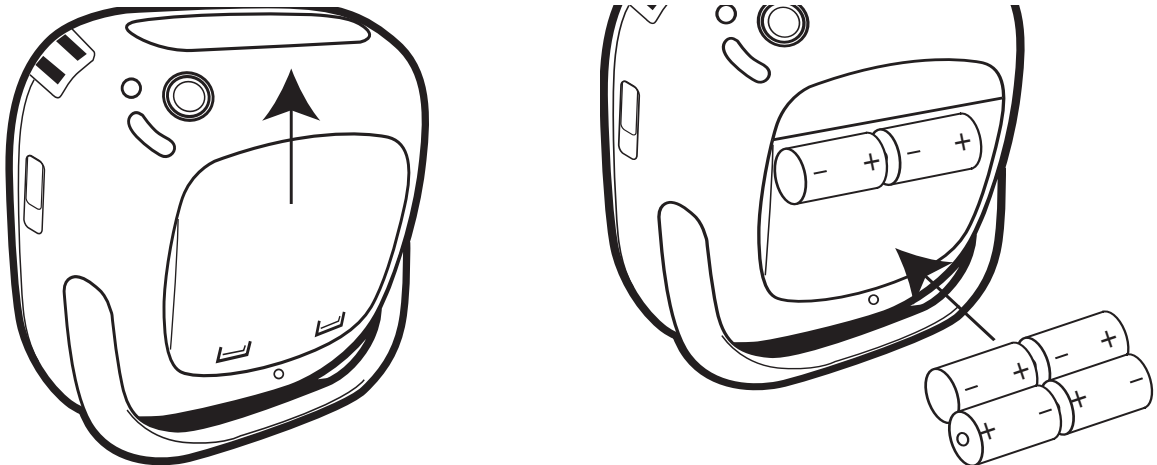
To operate the unit using AC power, connect an AC adapter (included) to an AC outlet having 120V, 60Hz AC only. Plug the small end into the DC jack on the rear of the unit and connect the other end into the AC outlet. The batteries are automatically disconnected when the AC adapter is used.

DC 9V 

BATTERY INSTALLATION

To use this unit with battery power, remove the battery door on the rear of the unit by sliding it towards the arrows on the battery compartment. Insert six (6) 'C' size batteries following the diagram in the compartment. When battery power is low and they need to be replaced, "🔋" will appear in the display.

NOTE: The AC adapter must be disconnected from the AC power jack on the rear of the unit in order for the unit to operate on battery power.



BATTERY PRECAUTIONS

Follow these precautions when using batteries in this device:

1. Use only the size and type of batteries specified.
2. Be sure to follow the correct polarity when installing the batteries as indicated in the battery compartment. Reversed batteries may cause damage to the device.
3. Do not mix different types of batteries together (e.g. Alkaline, Rechargeable and Carbon-zinc) or old batteries with fresh ones.
4. If the device is not to be used for a long period of time, remove the batteries to prevent damage or injury from possible battery leakage.
5. Do not try to recharge batteries not intended to be recharged; they can overheat and rupture. (Follow battery manufacturer's directions.)

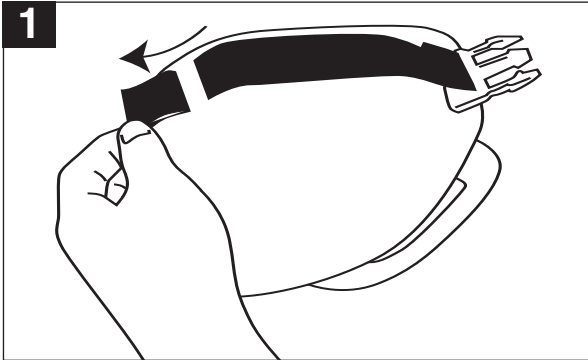
HEADPHONE JACK (SIDE OF UNIT)

For private listening, connect low impedance 3.5mm (32 ohm) stereo headphones (not included) to this jack. The speakers are automatically disconnected when the headphone plug is inserted in the jack.

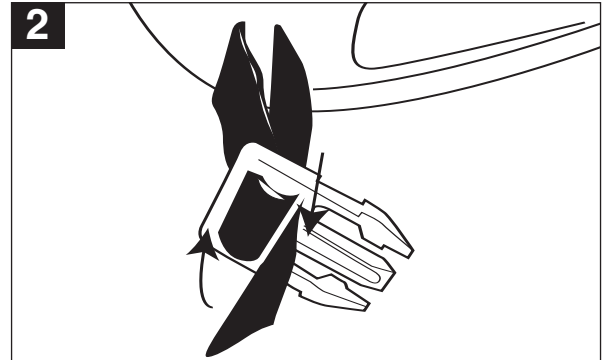
STAND (REAR OF UNIT)

Slide the Stand outward to use the Stand.

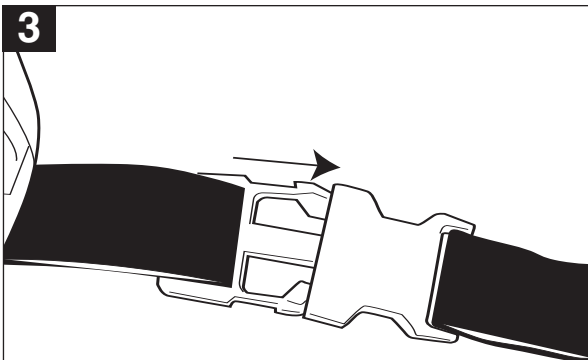
CONNECTING THE STRAP



1
Insert the small arm straps into the slots on both sides of the unit and pull through.



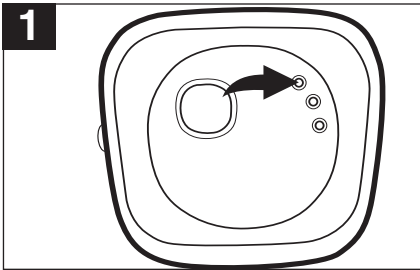
2
Insert the strap into the gap, pull through and then insert into the other gap. Pull tight to fasten.



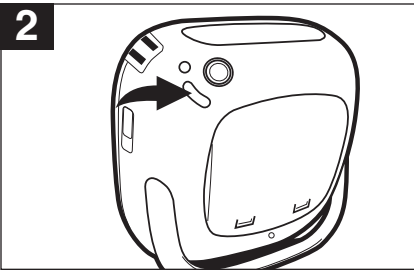
3
Connect the larger strap to the connected smaller straps.

RADIO OPERATION

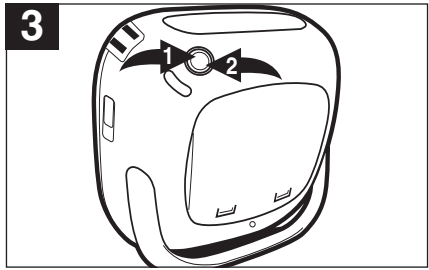
TO PLAY THE RADIO



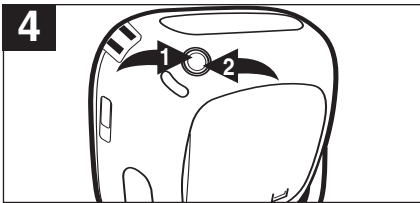
Press the POWER button to turn the unit on.



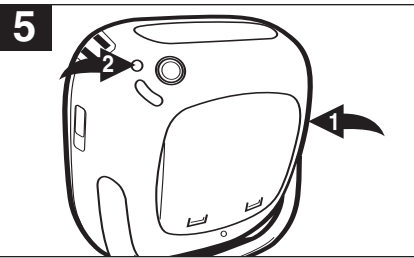
Press the BAND button to select radio. Repeatedly press the BAND button to select AM or FM.



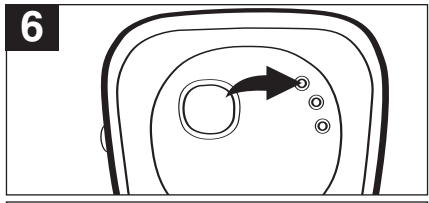
MANUAL TUNING: Repeatedly press the Tune/Skip/Search **◀ 1** or **▶ 2** button to manually advance the frequency in the display up or down until the desired frequency appears.



AUTOMATIC TUNING: Press and hold the Tune/Skip/Search **◀ 1** or **▶ 2** button until the frequency in the display starts to scan, and then release the button; the tuner will search and then stop on the next strong station it finds. Repeat this step until the desired frequency appears in the display.



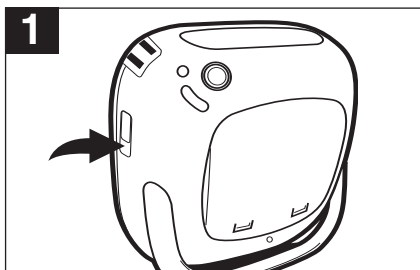
Adjust the VOLUME control **1** and BBS button **2** as desired. Press the BBS button **2** to enhance the bass sound; "BBS" will light in the display.



To turn the radio off, press the POWER button again.

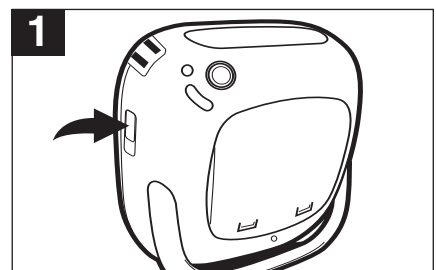
The Stereo indicator "((ST))" will appear on the display if a FM station tuned in is in Stereo. If the radio broadcast is not strong enough or not in stereo, the Stereo indicator "((ST))" will not appear in the display.

HOLD SWITCH



Slide the HOLD switch to the HOLD (down) position to disable the buttons. Slide the HOLD switch to the OFF (up) position to enable the buttons again.

HEADPHONES



To listen to the unit through headphones, simply insert the headphones (not included) into the Headphones jack. The speakers will be disconnected when the headphones are plugged in.

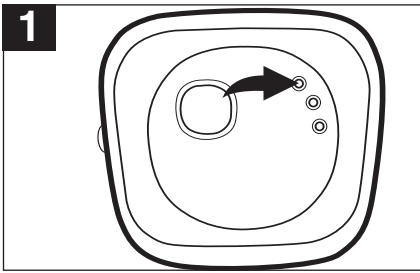
ANTENNAS

AM—Turn the unit for better AM reception.

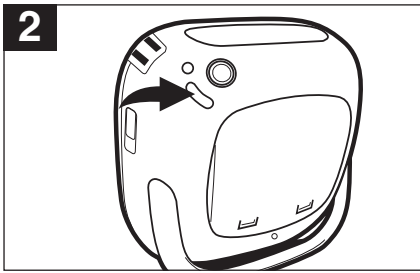
FM—FM: Turn the unit for better FM reception.

RADIO OPERATION (CONTINUED)

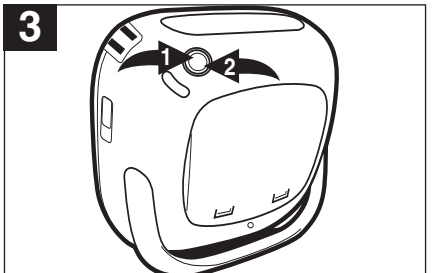
RADIO PRESETS - UP TO 5 AM AND 5 FM



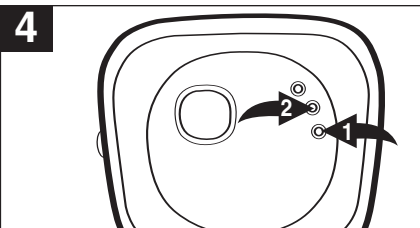
Press the POWER button to turn the unit on.



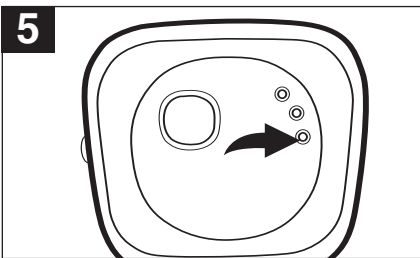
Press the BAND button to select radio. Repeatedly press the BAND button to select AM or FM.



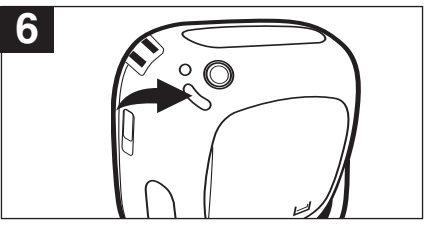
Select a station using the Tune/Skip/Search \ll ❶ or \gg ❷ button.



Press the PROG./CH SAVE button ❶; the preset number will blink in the display. Within three seconds, press the MODE/CH+ button ❷ repeatedly until the desired memory number appears on the display.



Press the PROG./CH SAVE button again to set the station in the selected memory.

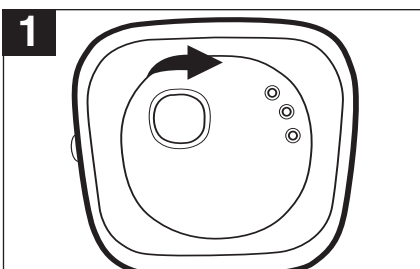


Repeat steps 2 through 5 to program up to 5 stations in each band, if desired.

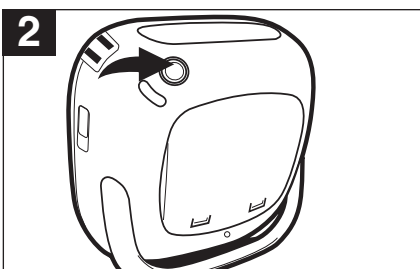
TO RECALL: Follow step 1 above. Repeatedly press the MODE/CH+ button to select a preset; the station will automatically be tuned in.

COMPACT DISC (CD) OPERATION

TO INSERT A CD



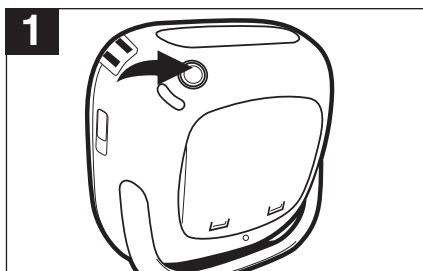
Open the CD compartment by pressing the CD Door Open/Close area. **Gently** insert a CD onto the spindle (label side facing forward) until it clicks. Close the CD compartment.



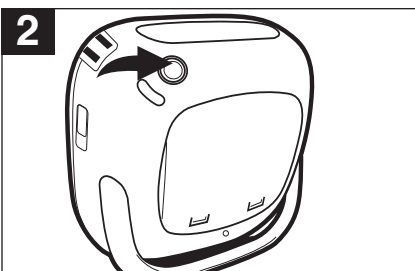
Press the PLAY/PAUSE (▶||)/CD button to select CD; playback will start automatically.

COMPACT DISC (CD) OPERATION (CONTINUED)

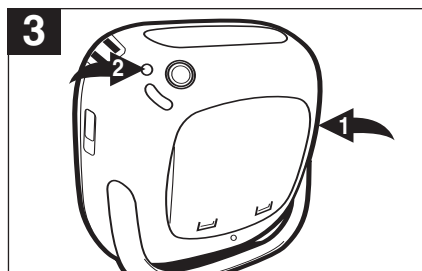
TO PLAY A CD (STANDARD CD, CD-R AND CD-RW CAN BE USED)



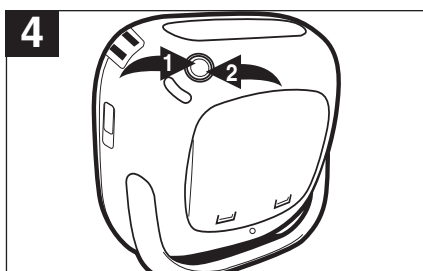
1 Insert a CD as described on page 8. With the power on, press the PLAY/PAUSE (▶||)/CD button to select CD; playback will start automatically.



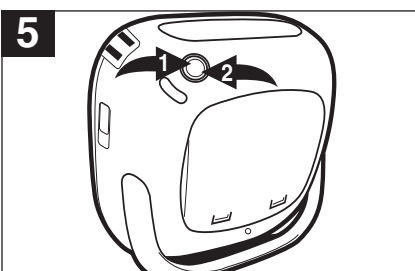
2 If in the Stop mode, press the PLAY/PAUSE (▶||)/CD button. Press the PLAY/PAUSE (▶||)/CD button again to pause playback; the elapsed time will blink in the display.



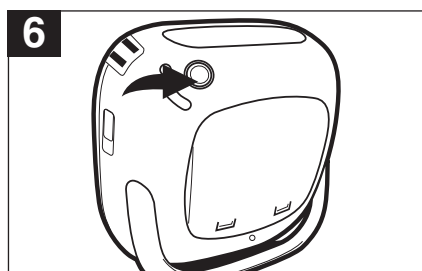
3 Adjust the VOLUME control ① and BBS button ② as desired. Press the BBS button ② to enhance the bass sound; "BBS" will light in the display.



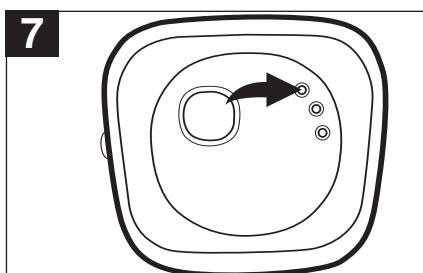
4 To **skip** forward or backward through the tracks on the disc, press the Tune/Skip/Search ◀ ① or ▶ ② button.



5 To **search** forward or backward through the music on a disc, press and hold the Tune/Skip/Search ◀ ① or ▶ ② button, a chattering noise will be heard.



6 When the disc is through playing, it will stop rotating. Press the Stop (■) ① button to stop the disc before it is finished.



7 To turn the unit off, press the POWER button again.

FAQS:

Do I need an adapter to play 3" singles?
No, simply insert the 3" single into the groove.

What is the maximum time for a CD in this unit?
The maximum time is 74 minutes.

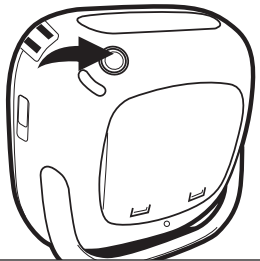
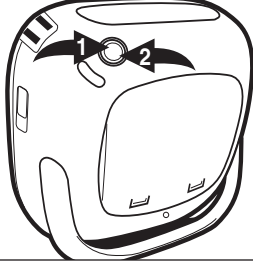
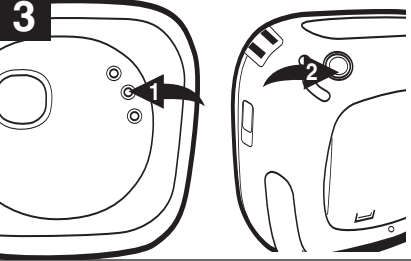
What type of CDs can I play?
CD, CD-Rs and CD-RWs can be used.

NOTES:

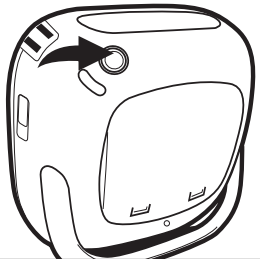
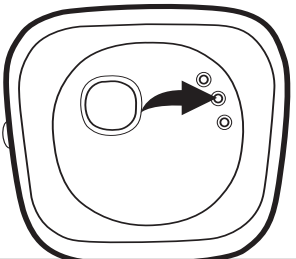
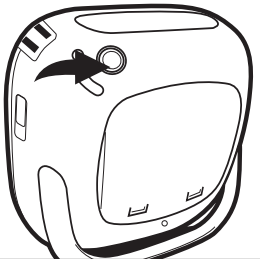
- If a disc is inserted incorrectly, dirty, damaged or not present at all, "no DISC" will appear in the display.
- As each track is played, the track number is shown in the display.
- To prevent damage to the disc, never open the CD door while the disc is rotating. Wait for the disc to stop before opening the CD door. Never touch the lens when the CD door is open.

COMPACT DISC (CD) OPERATION (CONTINUED)

TO REPEATEDLY PLAY BACK ONE TRACK

1 	2 	3 
<p>Insert a CD as described on page 8. With the power on, press the PLAY/PAUSE (▶)/CD button to select CD; playback will start automatically.</p>	<p>Press the Tune/Skip/Search ◀◀ ❶ or ▶▶ ❷ button to select a track to repeat.</p>	<p>Press the MODE/CH+ button ❸ once; "REPEAT 1" will appear in the display and the unit will play the same track over and over until the Stop (■) button ❹ is pressed.</p>

TO REPEATEDLY PLAY BACK ALL TRACKS

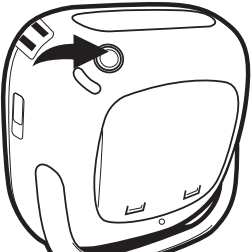
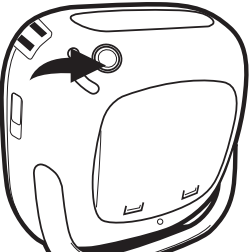
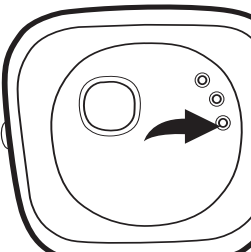
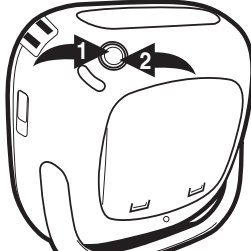
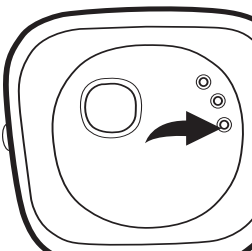
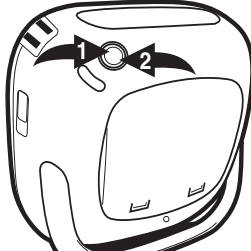
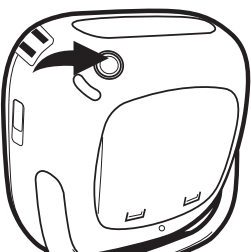
1 	2 	3 
<p>Insert a CD as described on page 8. With the power on, press the PLAY/PAUSE (▶)/CD button to select CD; playback will start automatically.</p>	<p>Press the MODE/CH+ button twice; "REPEAT ALL" will appear in the display.</p>	<p>The unit will play the entire disc over and over until the Stop (■) button is pressed.</p>

NOTES:

- To stop and cancel Repeat playback, press the Stop (■) button.
- To activate repeat, during playback, press the MODE/CH+ button repeatedly to select "REPEAT 1" or "REPEAT ALL".

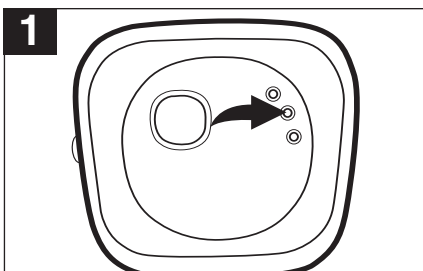
COMPACT DISC (CD) OPERATION (CONTINUED)

TO PROGRAM THE MEMORY (UP TO 20 TRACKS)

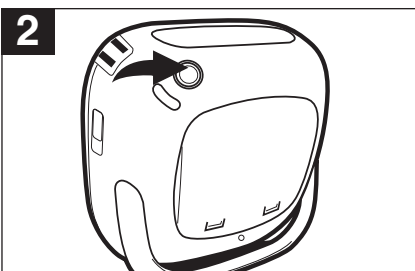
1 	2 	3 
<p>Insert a CD as described on page 8. With the power on, press the PLAY/PAUSE (▶)/CD button to select CD; playback will start automatically.</p>	<p>Press the Stop (■) button to stop playback.</p>	<p>Press the PROG./CH SAVE button once; "P 01" (program number), "00" track number and the Program indicator will appear in the display.</p>
4 	5 	6 
<p>Select the first track to be played back using the Tune/Skip/Search ◀▶ or ▶▶ button.</p>	<p>Press the PROG./CH SAVE button again.</p>	<p>Repeat steps 3 to 5 to program the other desired tracks in sequence (up to 20 tracks).</p>
7 	NOTES: <ul style="list-style-type: none">• Programming is the ability to preselect the order in which a series of tracks will be played.• Each track may be stored in the program memory as many times as desired (up to 20 tracks).• As each track is played, its track number will be displayed. You can move forward or backward through the programmed tracks with the Tune/Skip/Search ▶▶ or ◀▶ button.• The CD player will stop after all programmed tracks have been played or the Stop (■) button is pressed.• To cancel programmed playback, press the Stop (■) button while in the stop mode, or open the CD door.• After you have selected 20 tracks (the last programmed memory) and press the PROG./CH SAVE button to confirm, the display will continue to show "P20".	
<p>Press the PLAY/PAUSE (▶)/CD button to begin playback; "PROG" will light and the tracks will play in the order programmed.</p>		

COMPACT DISC (CD) OPERATION (CONTINUED)

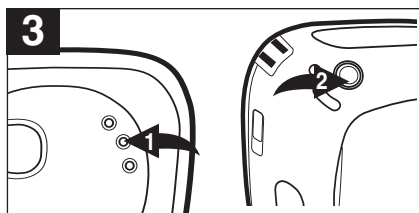
RANDOM PLAYBACK



1 While in the CD Stop mode, press the MODE/CH+ button once, the "RANDOM" indicator will appear in the display.

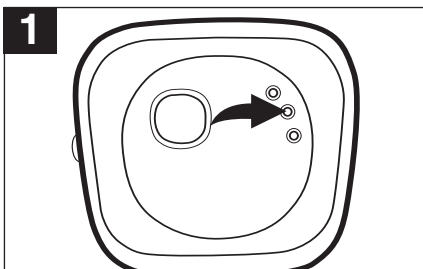


2 Press the PLAY/PAUSE (▶||)/CD button to start playing the tracks randomly.

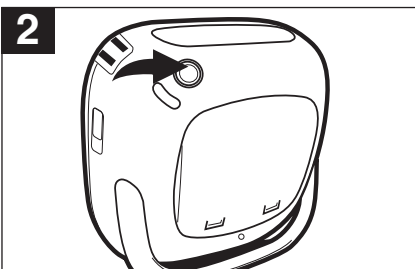


3 During Random playback, press the MODE/CH+ button ❶ twice to activate Random Repeat; both "RANDOM" and "REPEAT ALL" indicators will light. To Stop Random or Random Repeat playback, press the Stop (■) button ❷ once. Both indicators will disappear from the display.

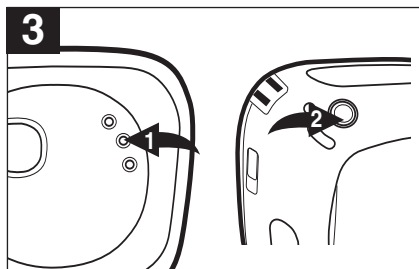
INTRO PLAYBACK



1 While in the CD Stop mode, press the MODE/CH+ button twice, the "INTRO" indicator will appear in the display.



2 Press the PLAY/PAUSE (▶||)/CD button to start INTRO playback the tracks; the unit will play the first 10 seconds of each track.

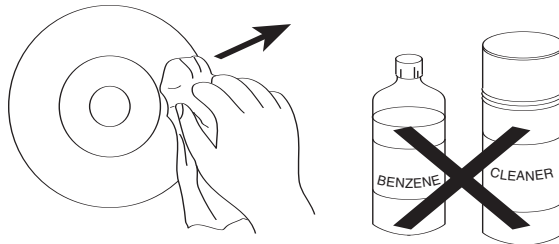
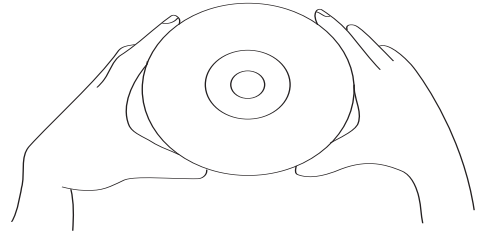


3 During intro playback, press the MODE/CH+ button ❶ twice to activate Intro Repeat; both "INTRO" and "REPEAT ALL" indicators will light. To Stop Intro or Intro Repeat playback, press the Stop (■) button ❷ once. Both indicators will disappear from the display.

CARE AND MAINTENANCE

Caring for Compact Discs

- Treat the compact disc carefully. Handle the compact disc only by its edges. Never allow your fingers to come in contact with the shiny, unprinted side of the compact disc.
- Do not attach adhesive tape, stickers, etc. to the disc label.
- Clean the compact disc periodically with a soft, lint-free, dry cloth. Never use detergents or abrasive cleaners to clean the compact disc. If necessary, use a CD cleaning kit.
- If a disc skips or gets stuck on a section of the compact disc, it is probably dirty or damaged (scratched).
- When cleaning the compact disc, wipe in straight lines from the center of the compact disc to the outer edge of the compact disc. Never wipe in circular motions.



- This unit is designed to play only compact discs bearing the identification logo as shown here. Other discs may not conform to the CD standard and may not play properly.
- Compact Discs should be stored in their cases after each use to avoid damage.
- Do not expose compact discs to direct sunlight, high humidity, high temperatures or dust, etc. Prolonged exposure or extreme temperatures can warp the compact disc.
- Do not stick or write anything on either side of the compact disc. Sharp writing instruments, or the ink may damage the surface.



Cleaning the Unit

- To prevent fire or shock hazard, disconnect your unit from the AC power source when cleaning.
- The finish on your unit may be cleaned with a dust cloth and cared for as other furniture. Use caution when cleaning and wiping the plastic parts.
- Mild soap and a damp cloth may be used on the front panel.

TROUBLESHOOTING GUIDE

Should this unit exhibit a problem, check the following before seeking service:

Symptom	Possible Cause	Solution
Radio		
Noise or sound distorted on radio broadcasts.	Station not tuned properly for AM or FM.	Retune the AM or FM broadcast station.
	FM: AC adapter cord is not extended fully.	Fully extend AC adapter cord.
	AM: Unit is not positioned correctly.	Rotate unit until best reception is obtained.
AM or FM, no sound.	BAND button not pressed.	Press BAND button to select the radio.
	Volume at minimum.	Increase volume.
Compact Disc Player		
CD Player will not play.	CD is not selected.	Press the Play/Pause button to select CD.
	CD is not installed or is installed upside-down.	Insert CD with label side facing forward.
CD skips while playing.	Disc is dirty or scratched.	Wipe disc with cloth or use another disc.
General		
No sound.	AC adapter disconnected.	Connect AC adapter.
	No batteries, dead batteries or batteries not installed properly.	Insert fresh batteries properly.
	Power is off.	Press the POWER button to turn the unit on.

FOR ADDITIONAL SET-UP OR OPERATING ASSISTANCE, PLEASE VISIT OUR WEBSITE AT WWW.MEMOREXELECTRONICS.COM OR CONTACT CUSTOMER SERVICE AT 1-800-919-3647.

PLEASE KEEP ALL PACKAGING MATERIAL FOR AT LEAST 90 DAYS IN CASE YOU NEED TO RETURN THIS PRODUCT TO YOUR PLACE OF PURCHASE OR MEMOREX.

FOR PARTS AND ACCESSORIES, CONTACT FOX INTERNATIONAL AT 1-800-321-6993.

SPECIFICATIONS

GENERAL:

Power Source.....DC IN 9V, Center Positive
Battery9V DC (6 x 1.5V "C" size batteries)
Alkaline is recommended for longer life
Speaker2 x 3W 4 Ohms
Output Power 2 x 1.2W

RADIO SECTION:

Frequency Range (FM).....87.5 - 108 MHz
Frequency Range (AM)520 -1710 KHz

CD SECTION:

Disc Diameter4.72" (120mm)
3.15" (80mm) Single CD
Optical SourceSemiconductor Laser

Specifications are subject to change without notice.

Memcorp, Inc.
Weston, FL
Printed in Hong Kong

Visit our website at www.memorexelectronics.com